

# St Clement & St James CE Primary School



Newsletter - Friday 8 November 2019

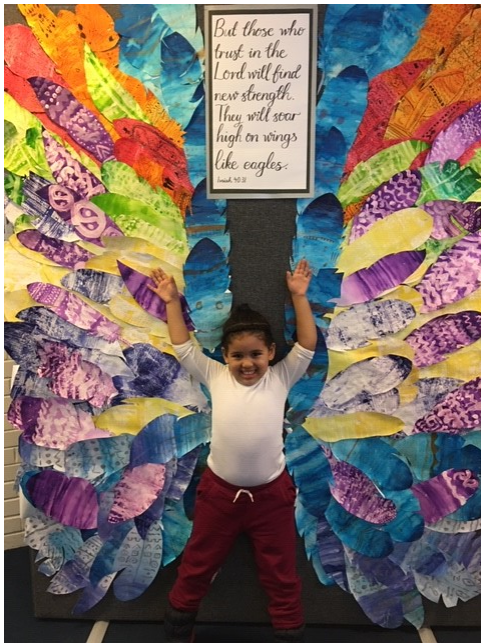


## Angel of the week: Mariana from Barn Owlets

Mariana is a wonderful member of our school community who follows our Christian Values.

She always listens and does her work and is very good at tidying up too!

Well done Mariana, we are all so proud of you!



## CERTIFICATES THIS WEEK

### Top Table

These children have shown good manners at lunchtime and will be a guest on Top Table next

|        |         |
|--------|---------|
| Year 1 | Ophelia |
| Year 2 | Silver  |
| Year 3 | Harry   |
| Year 4 | Omar    |
| Year 5 | Jomari  |
| Year 6 | Chanel  |

### This week's Learning Leaders

These children have consistently demonstrated Learning Leader attributes this week

|        |         |
|--------|---------|
| Year 1 | Dante   |
| Year 2 | Beamlak |
| Year 3 | Lucia   |
| Year 4 | Anisa   |
| Year 5 | Quin    |
| Year 6 | Hanna   |

## Flu immunisations.

Children of primary school age are entitled to a flu immunisation nasal spray, which our school nurse will be administering on Wednesday December 11. Paper copies of the emailed leaflet are available at the office.

### Keeping germs away

At this time of year, there are always more sickness bugs around so having good hygiene is even more important. Germs can spread quickly in schools too, so please take a few minutes this week to talk to your children about how important it is to wash their hands thoroughly and how we can all help keep our communal toilet areas as clean as possible. If your child is, or has been, unwell please follow the guidance from Public Health England before bringing children back to school.

We have poppies for sale to support The Royal British Legion. They are available in the office and also in the playground at the end of the school day.

A beautiful piece of artwork by Luca in Y6



Lest We Forget

### Attendance and Punctuality (on time/late)

|            | Reception | Year 1 | Year 2 | Year 3 | Year 4 | Year 5 | Year 6 |
|------------|-----------|--------|--------|--------|--------|--------|--------|
| Attendance | 86.8%     | 95.0%  | 97.8%  | 97.7%  | 95.8%  | 96.3%  | 97.2%  |
| Lates      | 0         | 0      | 5      | 4      | 7      | 15     | 3      |

Year 2 had the highest attendance again this week with 97.8%.  
Well done to Rec & Y1, no children were late in these classes this week.

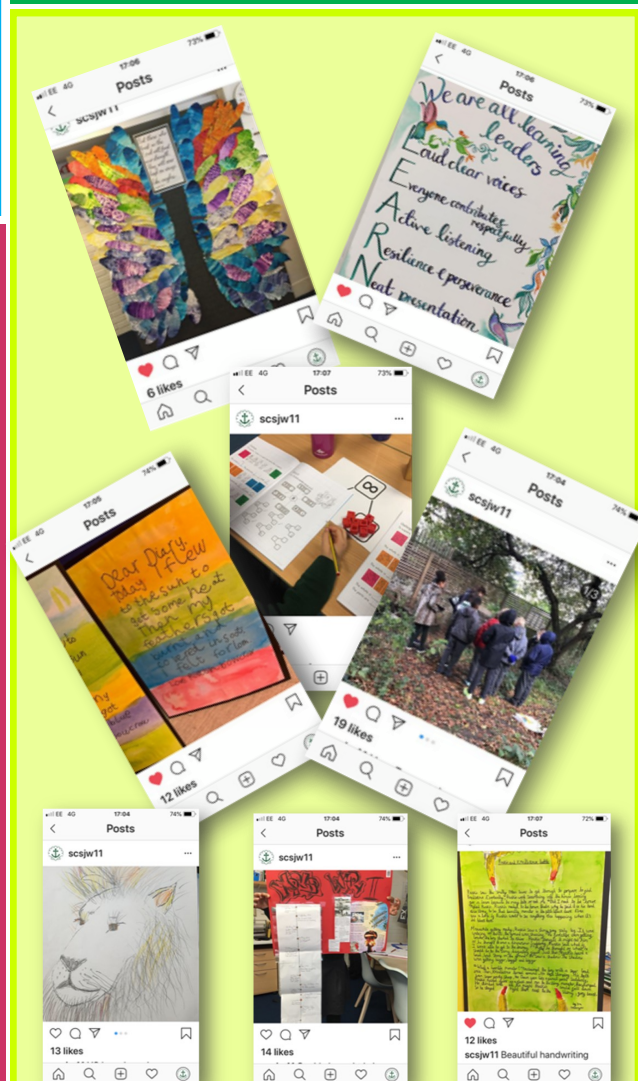
### Christmas Markets coming to St Clement & St James school playground



### Instagram account

Two weeks ago we set up a St Clement and St. James' School Instagram account and we have been busy posting. We have 57 followers already! Please follow us, via the Instagram app, at:

**scsjw11**



### Dates for your diary

**Wed 13 Nov:** 2:45 Y4 shared learning assembly

**Fri 15 Nov:** Children in Need

**Fri 15 Nov:** Early Years to Forest School 1-3pm

**Fri 15 Nov:** Reports for parents of children from Year 1 – 6 available to collect from the school office. Barn Owlet parents please collect from Miss George and Mrs Moran

**Mon 18 Nov: INSET DAY SCHOOL CLOSED**

**Wed 20 Nov:** 2:45 Y5 shared learning assembly

**Fri 22 Nov:** Early Years to Forest School 1-3pm

**W/C Mon 25 Nov:** Pupil progress meetings. Please book a time to meet your child's class teacher

**Wed 27 Nov:** 2:45 Y6 shared learning assembly

**Tues 10 Dec:** 2pm Barn Owlets Nativity play

**Tues 10 Dec:** 3.45-5.30 Christmas Party

**Thurs 12 Dec: POLLING DAY SCHOOL CLOSED**

**Tues 17 Dec:** 2pm KS1 Nativity play

**Tues 17 Dec:** 6pm KS2 Carol Service at St Clement Church (new venue)

**Weds 18 Dec:** Christmas Lunch

**Weds 18 Dec:** Christmas Jumper Day

Pay £1 to wear a Christmas Jumper to school

Please follow us and give us a

